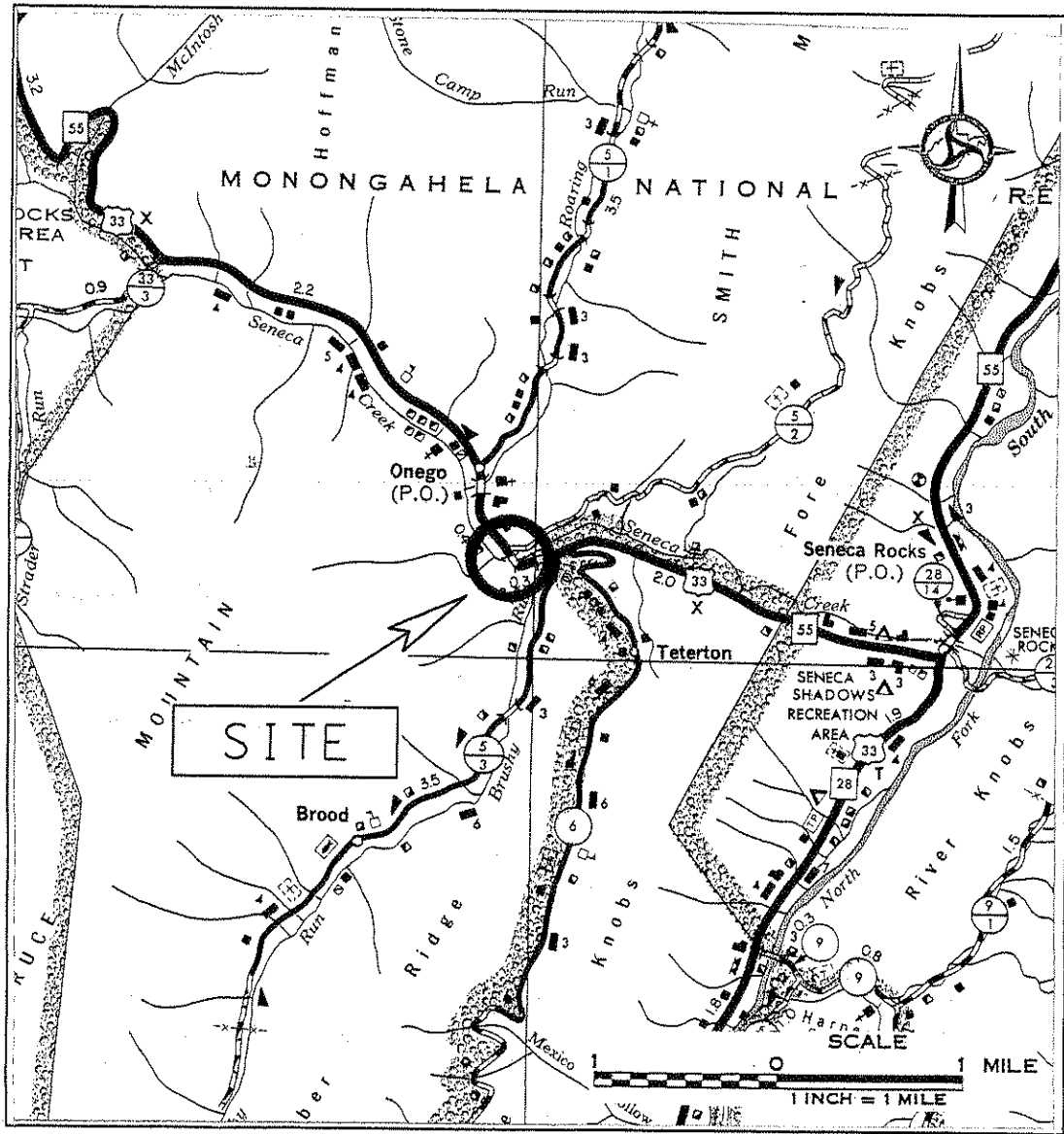
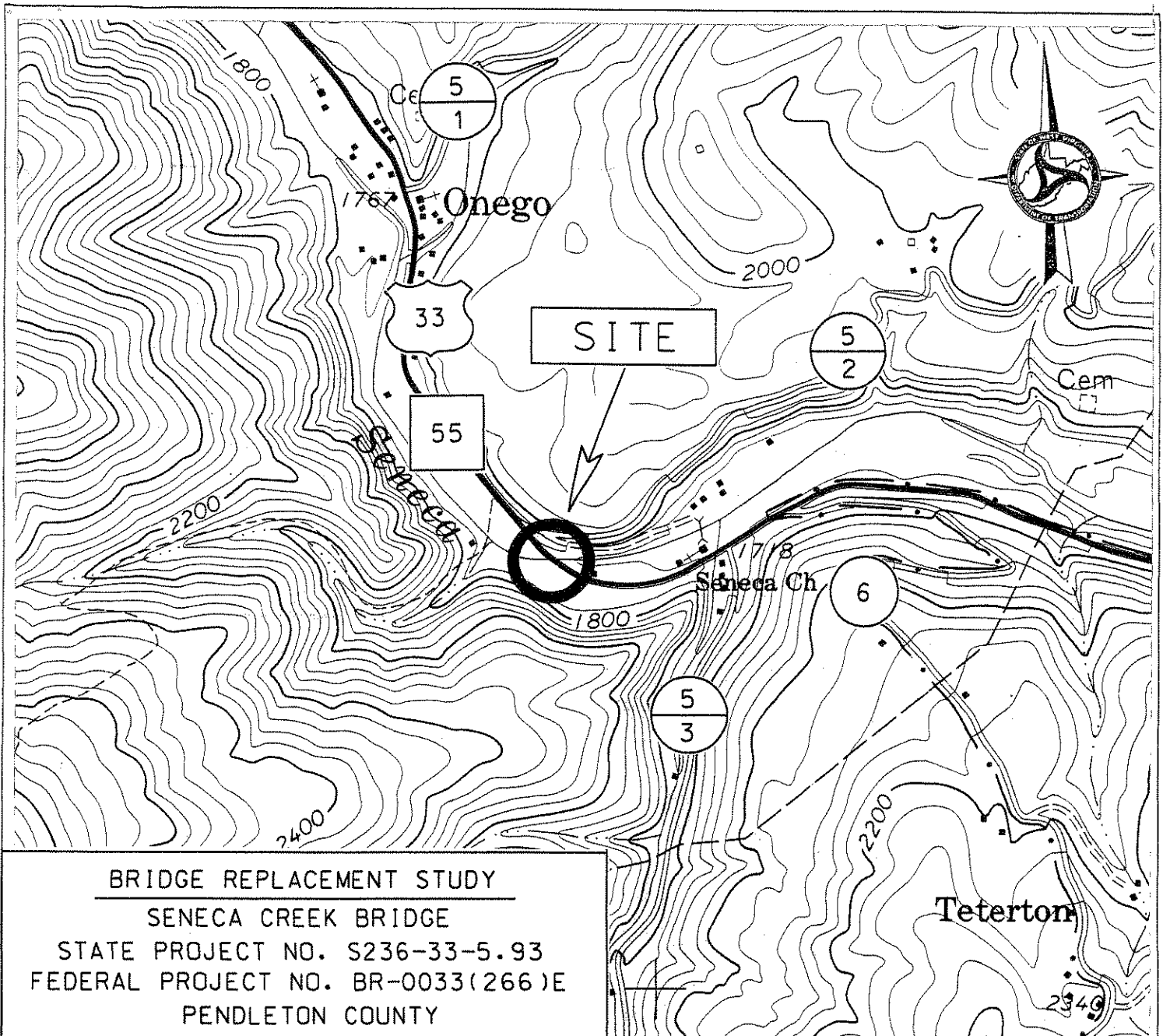


BRIDGE REPLACEMENT STUDY
 SENECA CREEK BRIDGE
 STATE PROJECT NO. S236-33-5.93
 FEDERAL PROJECT NO. BR-0033(266)E
 PENDLETON COUNTY



NOVEMBER 2005
 WEST VIRGINIA DEPARTMENT OF TRANSPORTATION
 DIVISION OF HIGHWAYS
 PLANNING AND RESEARCH DIVISION



BRIDGE REPLACEMENT STUDY
 SENECA CREEK BRIDGE
 STATE PROJECT NO. S236-33-5.93
 FEDERAL PROJECT NO. BR-0033(266)E
 PENDLETON COUNTY

SITE PLAN

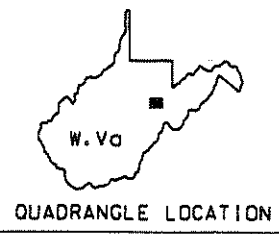


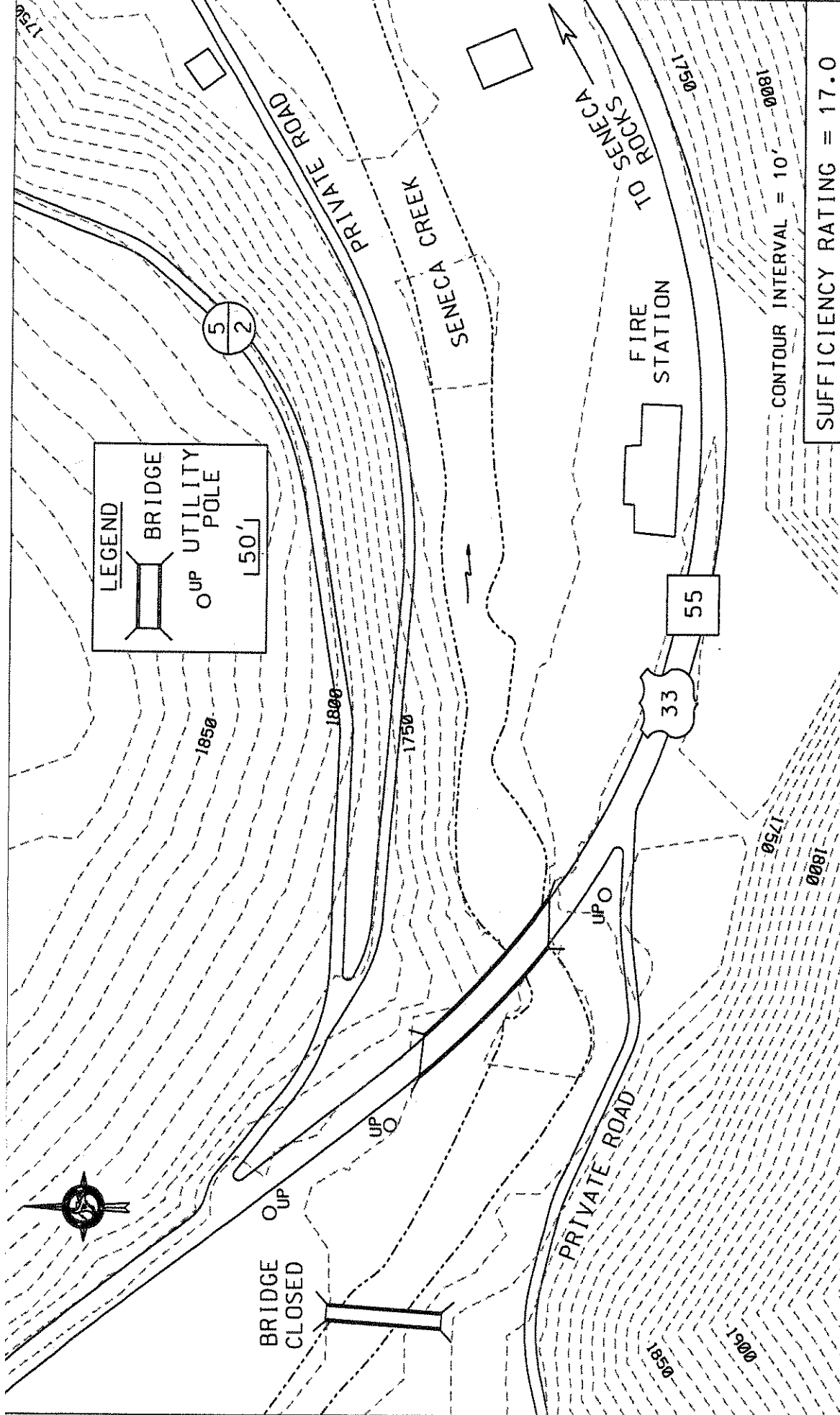
CONTOUR INTERVAL 40 FEET
 NATIONAL GEODETIC VERTICAL DATUM OF 1929

ROAD CLASSIFICATION

Heavy-duty		Light-duty	
Medium-duty		Unimproved dirt	

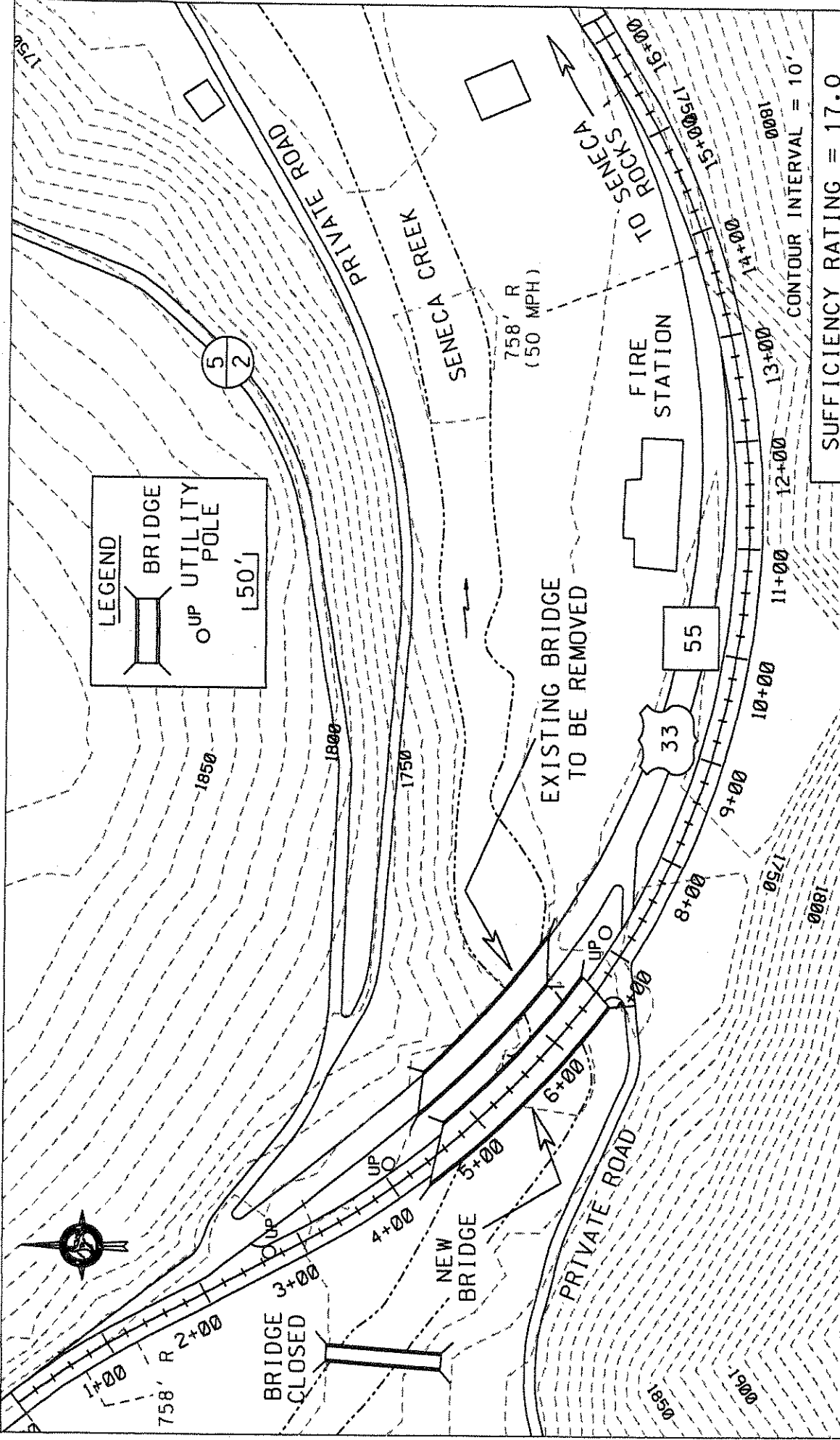
	Interstate Route		U.S. Route		State Route		County Route
--	------------------	--	------------	--	-------------	--	--------------





MAP #1
 BRIDGE REPLACEMENT STUDY
 SENECA CREEK BRIDGE
 STATE PROJECT NO. S236-33-5.93
 FEDERAL PROJECT NO. BR-0033(266)E
 PENDLETON COUNTY

EXISTING
 CONDITIONS
 SUFFICIENCY RATING = 17.0



SUFFICIENCY RATING = 17.0
 CONTOUR INTERVAL = 10'

**ALTERNATIVE #1
 ESTIMATED COSTS**

PRELIMINARY ENGINEERING:
 RIGHT OF WAY & UTILITIES:
 230' BRIDGE:
 1390' ROADWAY:
 BRIDGE DEMOLITION: TOTAL

FIGURE #1

BRIDGE REPLACEMENT STUDY

SENECA CREEK BRIDGE

STATE PROJECT NO. S236-33-5.93

FEDERAL PROJECT NO. BR-0033(266)E

PENDLETON COUNTY